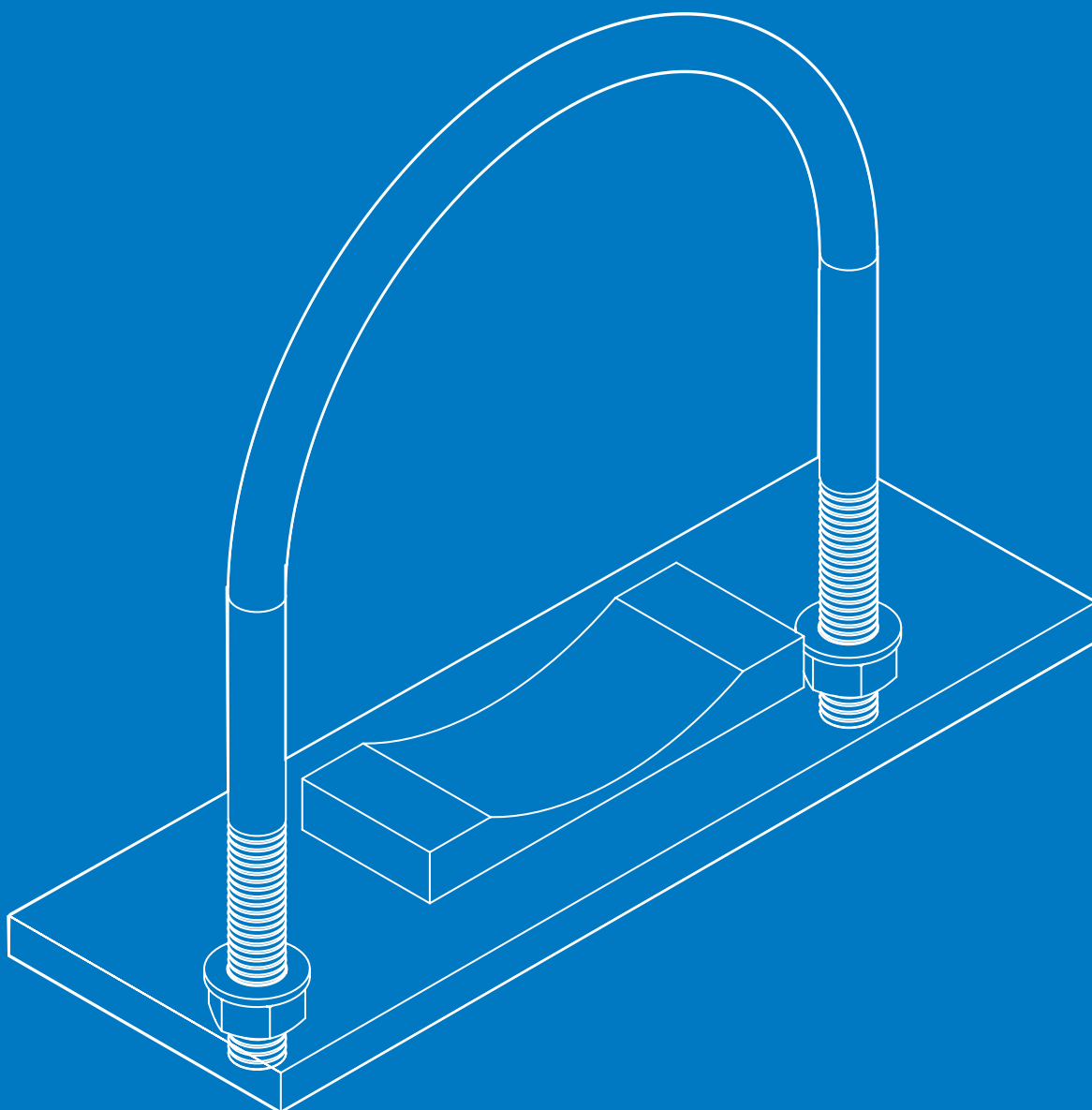


# U-BOLT Clamps

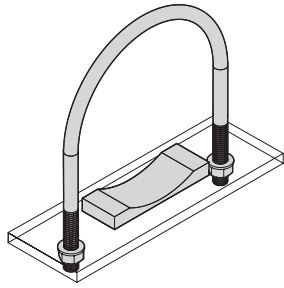
- **Light** U-bolt clamp ..... p 66
- **Medium** U-bolt clamp ..... p 68
- **Heavy** U-bolt clamp ..... p 70
- Round steel U-bolt clamp according to **DIN 3570** ..... p 72



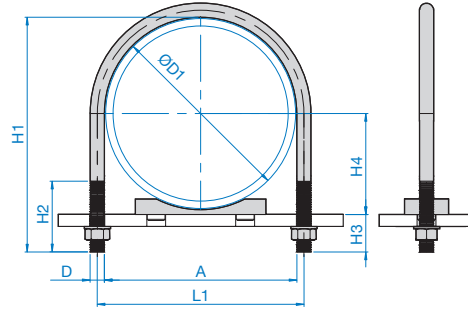
# LIGHT SERIES U-BOLT

## Type BC

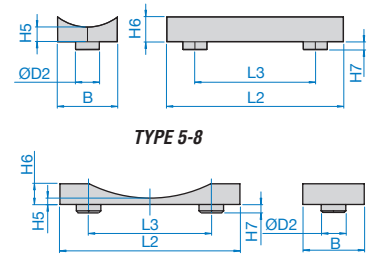
### Light series U-bolt CL



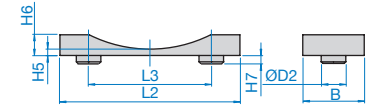
TYPE 1-20



### Plastic pipe saddle BC



TYPE 5-8



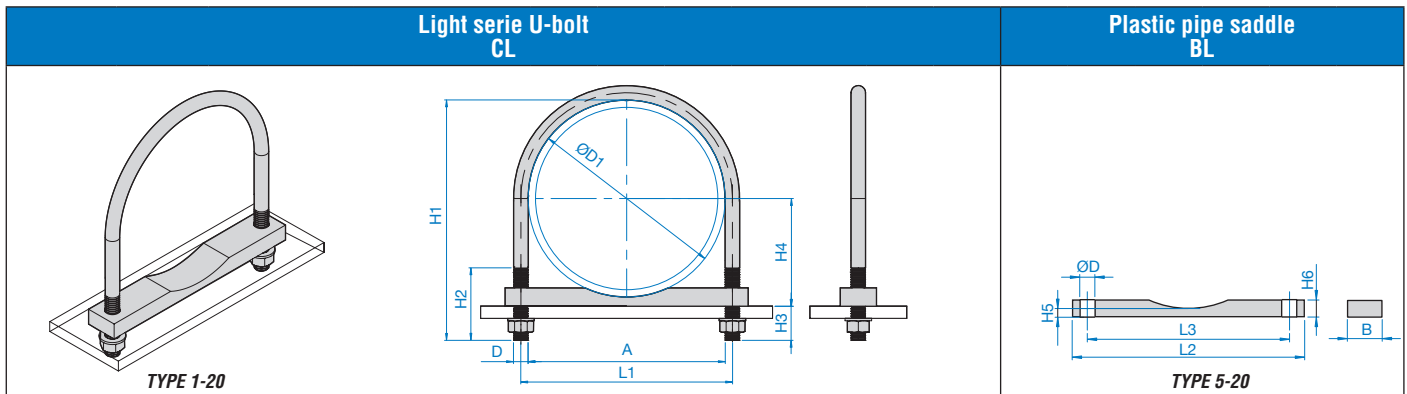
TYPE 9-20

For material characteristics  
see page 78.

Carbon steel St430 code CL  
Stainless steel AISI 304L code XCL

Plastic pipe saddle BC  
Material PP-PA

Code PI.EFFE.CI.	O. D. of Pipe ØD1		U-bolts with 2 nuts and 2 washers. The U-bolts finish CRAPAL with flanged nuts DIN 6923 Dacromet.									Plastic pipe saddle on demand.						
	in mm	nominal bore pipe in inch	Material and surface finishing	A	L1	H1	H2	H3	H4	D	L2	L3	B	H5	H6	H7	ØD2	
CL 01 CZF 01 XCL 01	10	1/8"	St430 Zinc plated	11	17	31	19	20	5	M6	35	25	24	8	5	8	8	
St430 Crapal			18															26
AISI 304L washed			18															26
CL 02 CZF 02 XCL 02	13,5	1/4"	St430 Zinc plated	14	20	34	19	19,2	6,8	M6	35	25	24	8	5	8	8	
St430 Crapal			17,2															26
AISI 304L washed			17,2															26
CL 03 CZF 03 XCL 03	17,2	3/8"	St430 Zinc plated	18	24	37	19	18,4	8,6	M6	35	25	24	8	5	8	8	
St430 Crapal			17,4															26
AISI 304L washed			17,4															26
CL 04 CZF 04 XCL 04	21,3	1/2"	St430 Zinc plated	22	28	43	25	20,4	10,6	M6	35	25	24	8	5	8	8	
St430 Crapal			17,4															26
AISI 304L washed			17,4															26
CL 05 CZF 05 XCL 05	26,9	3/4"	St430 Zinc plated	27	33	47	25	14,5	18,5	M6	35	25	24	8	5	8	8	
St430 Crapal			12,5															26
AISI 304L washed			12,5															26
CL 06 CZF 06 XCL 06	33,7	1"	St430 Zinc plated	34	40	55	30	15,2	21,8	M6	35	25	24	8	5	8	8	
St430 Crapal			12,2															26
AISI 304L washed			12,2															26
CL 07 CZF 07 XCL 07	42,4	1.1/4"	St430 Zinc plated	43	49	63	30	15	26	M6	35	25	24	8	5	8	8	
St430 Crapal			13															26
AISI 304L washed			13															26
CL 08 CZF 08 XCL 08	48,3	1.1/2"	St430 Zinc plated	49	57	73	30	18,8	29,2	M6	35	25	24	8	5	8	8	
St430 Crapal			15,8															26
AISI 304L washed			15,8															26
CL 09 CZF 09 XCL 09	60,3	2"	St430 Zinc plated	61	69	85	30	18,8	35,2	M8	38	50	10	6	10	10	10	
St430 Crapal			15,8															26
AISI 304L washed			15,8															26
CL 10 CZF 10 XCL 10	76,1	2.1/2"	St430 Zinc plated	77	85	101	30	19	43	M8	38	50	10	6	10	10	10	
St430 Crapal			16															26
AISI 304L washed			16															26
CL 11 CZF 11 XCL 11	88,9	3"	St430 Zinc plated	89	97	113	30	15,5	52,5	M8	38	50	10	6	10	10	10	
St430 Crapal			12,5															26
AISI 304L washed			12,5															26
CL 12 CZF 12 XCL 12	102	3.1/2"	St430 Zinc plated	102	110	130	35	19	59	M8	75	40 (40,5 PA)	70	17	15	15	15	
St430 Crapal			16															26
AISI 304L washed			16															26
CL 13 CZF 13 XCL 13	114,3	4"	St430 Zinc plated	115	123	142	35	18,8	65,2	M10	75	40 (40,5 PA)	70	17	15	15	15	
St430 Crapal			123															139
AISI 304L washed			123															139
CL 14 CZF 14 XCL 14	139,7	5"	St430 Zinc plated	140	150	165	35	20,2	77,8	M10	75	40 (40,5 PA)	70	17	15	15	15	
St430 Crapal			148															165
AISI 304L washed			148															165
CL 15 CZF 15 XCL 15	168	6"	St430 Zinc plated	168	178	202	45	26	92	M10	75	40 (40,5 PA)	70	17	15	15	15	
St430 Crapal			20															92
AISI 304L washed			20															92
CL 16 CZF 16 XCL 16	219	8"	St430 Zinc plated	220	230	254	45	26,5	117,5	M10	75	40 (40,5 PA)	70	17	15	15	15	
St430 Crapal			20,5															117,5
AISI 304L washed			20,5															117,5
CL 17 CZF 17 XCL 17	273	10"	St430 Zinc plated	274	284	308	45	26,5	144,5	M10	75	40 (40,5 PA)	70	17	15	15	15	
St430 Crapal			20,5															144,5
AISI 304L washed			20,5															144,5
CL 18	324	12"	St430 Zinc plated	324	340	368	60	36	170	M16	220	150 (152 PA)	32	30	30	30	30	
CL 19	356	14"	St430 Zinc plated	356	372	400	60	36	186	M16	220	150 (152 PA)	32	30	30	30	30	
CL 20	406,4	16"	St430 Zinc plated	408	424	452	60	37	211	M16	220	150 (152 PA)	32	30	30	30	30	



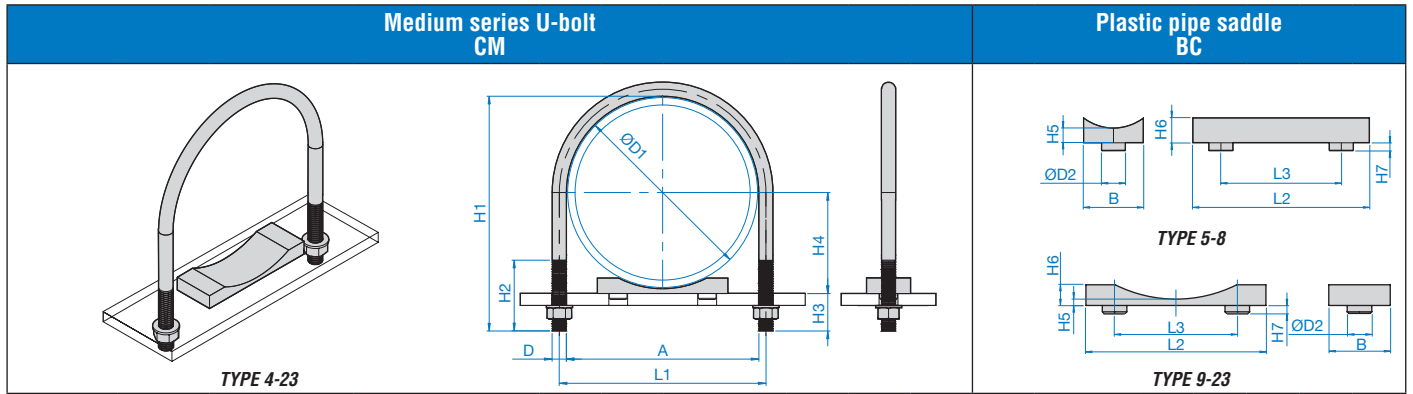
**TYPE 1-20**      **TYPE 5-20**

For material characteristics see page 78.      Carbon steel St430 code CL      Stainless steel AISI 304L code XCL      Plastic pipe saddle BL      Material PP-PA

Code PI.EFFE.CI.	O.D. of Pipe ØD1		Material and surface finishing	U-bolts with 2 nuts and 2 washers. The U-bolts finish CRAPAL with flanged nuts DIN 6923 Dacromet.							D	Plastic pipe saddle on demand.																					
	in mm	nominal bore pipe in inch		A	L1	H1	H2	H3	H4	L2		L3	B	H5	H6	ØD																	
CL 01 CZF 01 XCL 01	10	1/8"	St430 Zinc plated	11	17	31	19	20	5	M6	---																						
St430 Crapal			29								16	18	---																				
AISI 304L washed													---																				
CL 02 CZF 02 XCL 02	13,5	1/4"	St430 Zinc plated	14	20	34	19	19,2	6,8		---																						
St430 Crapal			32								16	17,2	---																				
AISI 304L washed													---																				
CL 03 CZF 03 XCL 03	17,2	3/8"	St430 Zinc plated	18	24	37	19	18,4	8,6		---																						
St430 Crapal			36								16	17,4	---																				
AISI 304L washed													---																				
CL 04 CZF 04 XCL 04	21,3	1/2"	St430 Zinc plated	22	28	43	25	20,4	10,6		---																						
St430 Crapal			40								18	17,4	---																				
AISI 304L washed													---																				
CL 05 CZF 05 XCL 05	26,9	3/4"	St430 Zinc plated	27	33	47	25	14,5	18,5		M8	70	37	30	12	11																	
St430 Crapal			45														18	12,5	---														
AISI 304L washed												---																					
CL 06 CZF 06 XCL 06	33,7	1"	St430 Zinc plated	34	40	55	25	15,2	21,8	75		43	35				15	13															
St430 Crapal			52																18	12,2	---												
AISI 304L washed										---																							
CL 07 CZF 07 XCL 07	42,4	1.1/4"	St430 Zinc plated	43	49	63	25	15	26	75		52							35	15	13												
St430 Crapal			61																			18	13	---									
AISI 304L washed										---																							
CL 08 CZF 08 XCL 08	48,3	1.1/2"	St430 Zinc plated	49	57	73	30	18,8	29,2	95		60										35	15	13									
St430 Crapal			70																						28	15,8	---						
AISI 304L washed										---																							
CL 09 CZF 09 XCL 09	60,3	2"	St430 Zinc plated	61	69	85	30	18,8	35,2	95		72													35	15	13						
St430 Crapal			82																									28	15,8	---			
AISI 304L washed										---																							
CL 10 CZF 10 XCL 10	76,1	2.1/2"	St430 Zinc plated	77	85	101	30	19	43	115	88	35		15	13																		
St430 Crapal			98													28												16	---				
AISI 304L washed										---																							
CL 11 CZF 11 XCL 11	88,9	3"	St430 Zinc plated	89	97	113	30	18,5	49,5	135	100		35			15	13																
St430 Crapal			110															28										15,5	---				
AISI 304L washed										---																							
CL 12 CZF 12 XCL 12	102	3.1/2"	St430 Zinc plated	102	110	130	35	17	61	150	117							35	15	13													
St430 Crapal			127																		14							14	---				
AISI 304L washed										---																							
CL 13 CZF 13 XCL 13	114,3	4"	St430 Zinc plated	115	123	142	35	16,8	67,2	185	131										35	15	13										
St430 Crapal			123																					139				13,8	---				
AISI 304L washed										---																							
CL 14 CZF 14 XCL 14	139,7	5"	St430 Zinc plated	140	148	169	35	18,2	79,8	210	154,5													35	15	13							
St430 Crapal			148																								165	14,2	---				
AISI 304L washed										---																							
CL 15 CZF 15 XCL 15	168	6"	St430 Zinc plated	168	178	202	35	24	94	220	182	35		15	13																		
St430 Crapal			196																								18	18	---				
AISI 304L washed										---																							
CL 16 CZF 16 XCL 16	219,1	8"	St430 Zinc plated	220	230	254	35	24,5	119,5	280	240		35			15	13																
St430 Crapal			248																								18,5	18,5	---				
AISI 304L washed										---																							
CL 17 CZF 17 XCL 17	273	10"	St430 Zinc plated	274	284	308	35	24,5	146,5	350	294							35	15	13													
St430 Crapal			302																								18,5	18,5	---				
AISI 304L washed										---																							
CL 18	324	12"	St430 Zinc plated	324	340	368	35	29	177	420	348										35	15	30				26						
CL 19	356	14"	St430 Zinc plated	356	372	400	35	29	193	460	380										35	15	30				26						
CL 20	406,4	16"	St430 Zinc plated	408	424	452	35	30	218	510	432										35	15	30				26						

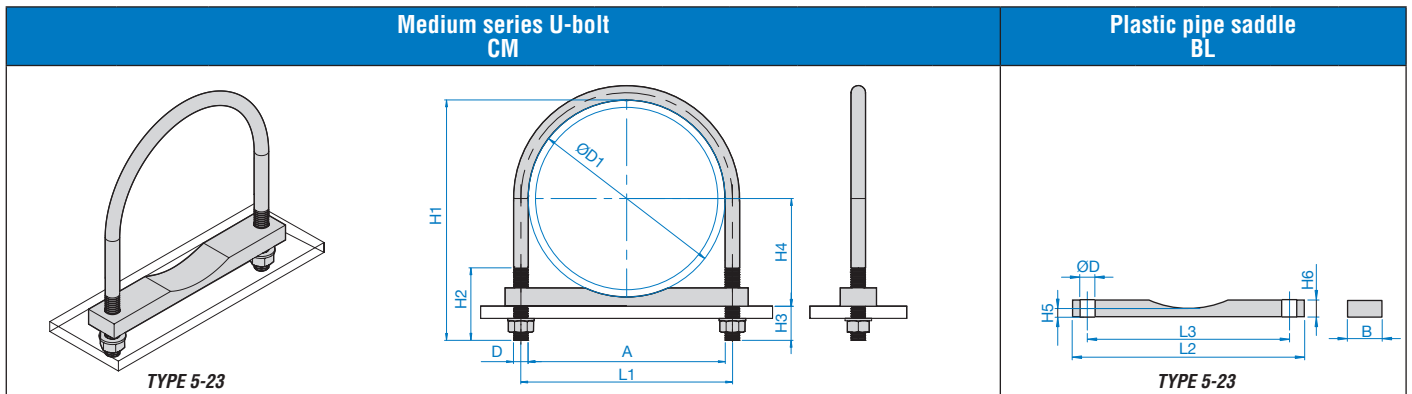
# MEDIUM SERIES U-BOLT

## Type BC



For material characteristics see page 78. Carbon steel St430 code CM Stainless steel AISI 304L code XCM Plastic pipe saddle BC Material PP-PA

Code P.L.EFFE.CI.	O.D. of Pipe ØD1		Material and surface finishing	U-bolts with 2 nuts and 2 washers.							D	Plastic pipe saddle on demand.																																																																											
	in mm	nominal bore pipe in inch		A	L1	H1	H2	H3	H4	L2		L3	B	H5	H6	H7	ØD2																																																																						
CM 04 XCM 04	21,3	1/2"	St430 Zinc plated	22	30	52	30	29,4	10,6	M8	35	25	5	24	8	5	8																																																																						
			AISI 316L washed			48	25	25,4										---																																																																					
CM 05 XCM 05	26,9	3/4"	St430 Zinc plated	27	35	56	30	23,5	18,5									M10	38	50	10	6	10	10																																																															
			AISI 316L washed			52	25	19,5																																																																															
CM 06 XCM 06	33,7	1"	St430 Zinc plated	34	42	64	30	24,2	21,8																M12	75	40 (40,5 PA)	70	17	15	15																																																								
			AISI 316L washed			60	25	20,2																																																																															
CM 07 XCM 07	42,4	1.1/4"	St430 Zinc plated	43	51	72	30	23,8	26,2																							M16	140	90 (91 PA)	8	26	10	25																																																	
			AISI 316L washed			68	25	19,8																																																																															
CM 08 XCM 08	48,3	1.1/2"	St430 Zinc plated	49	59	82	40	27,8	29,2																														M20	220	150 (152 PA)	75	32	30	30																																										
			AISI 316L washed			78	36	23,8																																																																															
CM 09 XCM 09	60,3	2"	St430 Zinc plated	61	71	94	40	27,8	35,2																																					M20	220	150 (152 PA)	75	32	30	30																																			
			AISI 316L washed			90	36	23,8																																																																															
CM 10 XCM 10	76,1	2.1/2"	St430 Zinc plated	77	87	110	40	28	43																																												M20	220	150 (152 PA)	75	32	30	30																												
			AISI 316L washed			106	36	24																																																																															
CM 11 XCM 11	88,9	3"	St430 Zinc plated	89	99	122	40	27,5	49,5																																																			M20	220	150 (152 PA)	75	32	30	30																					
			AISI 316L washed			118	36	23,5																																																																															
CM 12	102	3.1/2"	St430 Zinc plated	102	114	142	50	35	56																																																										M20	220	150 (152 PA)	75	32	30	30														
CM 13	114,3	4"	St430 Zinc plated	115	127	156	50	35,8	62,2																																																																														
CM 14	139,7	5"	St430 Zinc plated	140	152	180	50	35,2	74,8																																																																	M20	220	150 (152 PA)	75	32	30	30							
CM 15	168	6"	St430 Zinc plated	168	180	208	50	35	89																																																																														
CM 16	219	8"	St430 Zinc plated	220	236	267	60	42,5	114,5																																																																								M20	220	150 (152 PA)	75	32	30	30
CM 17	273	10"	St430 Zinc plated	274	290	321		42,5	141,5																																																																														
CM 18	324	12"	St430 Zinc plated	324	344	379	70	46	170																																																																														
CM 19	356	14"	St430 Zinc plated	356	376	411		46	186																																																																														
CM 20	406,4	16"	St430 Zinc plated	408	428	463	70	46,8	211,2	M20	220	150 (152 PA)	75	32	30	30																																																																							
CM 21	457,2	18"	St430 Zinc plated	460	480	515		47,4	236,6																																																																														
CM 22	508	20"	St430 Zinc plated	510	530	565	70	47	262								M20	220	150 (152 PA)	75	32	30	30																																																																
CM 23	609,6	24"	St430 Zinc plated	612	632	667		47,2	312,8																																																																														

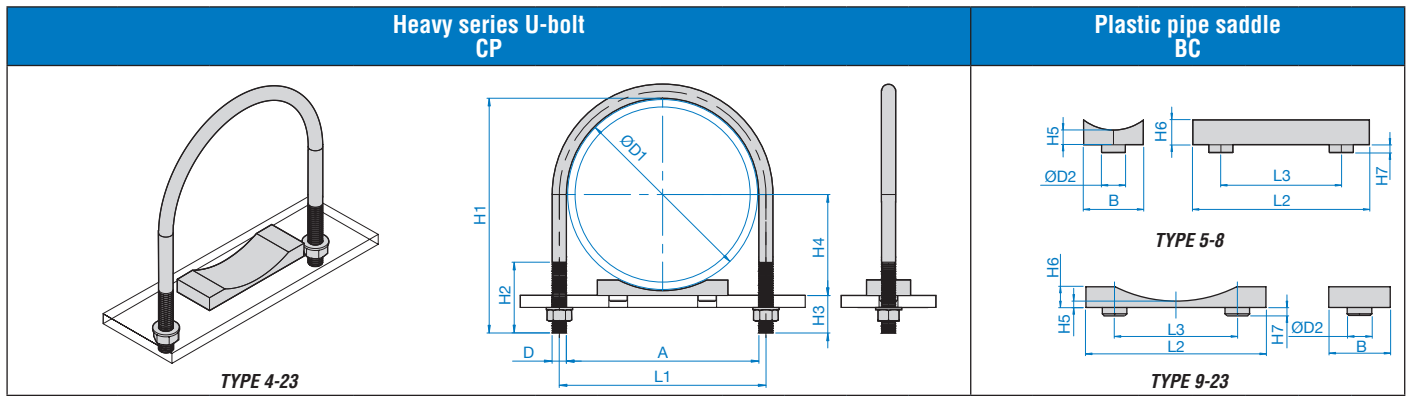


For material characteristics see page 78. Carbon steel St430 code CM Stainless steel AISI 304L code XCM Plastic pipe saddle BL Material PP-PA

Code PI.EFFE.CI.	O.D. of Pipe ØD1		Material and surface finishing	U-bolts with 2 nuts and 2 washers.							D	Plastic pipe saddle on demand.					
	in mm	nominal bore pipe in inch		A	L1	H1	H2	H3	H4	L2		L3	B	H5	H6	ØD	
CM 04 XCM 04	21,3	1/2"	St430 Zinc plated	22	30	52	30	29,4	10,6	M8	---						
			AISI 316L washed			48	25	25,4									
CM 05 XCM 05	26,9	3/4"	St430 Zinc plated	27	35	56	30	23,5	18,5		70	37	30	12	11		
			AISI 316L washed			52	25	19,5									
CM 06 XCM 06	33,7	1"	St430 Zinc plated	34	42	64	30	24,2	21,8								
			AISI 316L washed			60	25	20,2									
CM 07 XCM 07	42,4	1.1/4"	St430 Zinc plated	43	51	72	30	24	26		75	52					
			AISI 316L washed			68	25	20									
CM 08 XCM 08	48,3	1.1/2"	St430 Zinc plated	49	59	82	40	27,8	29,2		95	60	35	5	15	13	
			AISI 316L washed			78	36	23,8									
CM 09 XCM 09	60,3	2"	St430 Zinc plated	61	71	94	40	27,8	35,2								
			AISI 316L washed			90	36	23,8									
CM 10 XCM 10	76,1	2.1/2"	St430 Zinc plated	77	87	110	40	28	43	115	88						
			AISI 316L washed			106	36	24									
CM 11 XCM 11	88,9	3"	St430 Zinc plated	89	99	122	40	27,5	49,5	135	100						
			AISI 316L washed			118	36	23,5									
CM 12	102	3.1/2"	St430 Zinc plated	102	114	142	50	30	61	M12	150	117	40	10	20	18	
CM 13	114,3	4"	St430 Zinc plated	115	127	156	50	30,8	67,2		185	131					
CM 14	139,7	5"	St430 Zinc plated	140	152	180	50	30,2	79,8		210	154,5					
CM 15	168	6"	St430 Zinc plated	168	180	208	50	30	94		220	182					
CM 16	219	8"	St430 Zinc plated	220	236	267	60	37,5	119,5	M16	280	240	50	25	22		
CM 17	273	10"	St430 Zinc plated	274	290	321		37,5	146,5		350	294					
CM 18	324	12"	St430 Zinc plated	324	344	379	70	39	177	M20	420	348	60	15	30	26	
CM 19	356	14"	St430 Zinc plated	356	372	411		39	193		460	380					
CM 20	406,4	16"	St430 Zinc plated	408	428	463		39,8	218,2		510	432					
CM 21	457,2	18"	St430 Zinc plated	460	480	515		40,4	243,6		550	484					
CM 22	508	20"	St430 Zinc plated	510	530	565		40	269		600	534					
CM 23	609,6	24"	St430 Zinc plated	612	632	667		40,2	319,8		700	636					

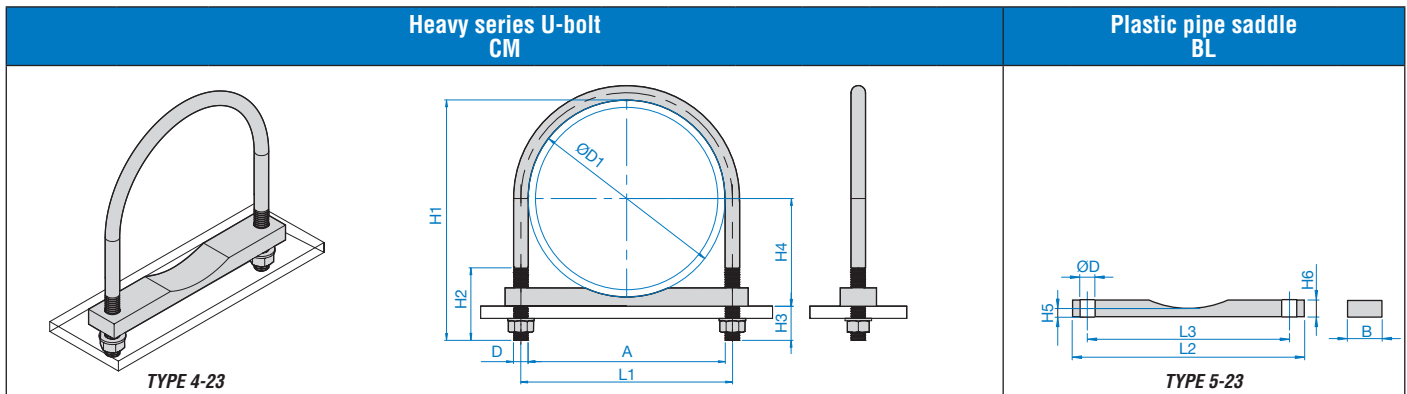
# HEAVY SERIES U-BOLT

## Type BC



For material characteristics see page 78. Carbon steel St430 code CP Stainless steel AISI 304L code XCP Plastic pipe saddle BC Material PP-PA

Code PI.EFFE.CI.	O.D. of Pipe ØD1		Material and surface finishing	U-bolts with 2 nuts and 2 washers.							Plastic pipe saddle on demand.						
	in mm	nominal bore pipe in inch		A	L1	H1	H2	H3	H4	D	L2	L3	B	H5	H6	H7	ØD2
CP 04 XCP 04	21,3	1/2"	St430 Zinc plated	22	32	60	40	38,3	10,7	M10	35	25	24	5	8	5	8
			AISI 304L washed		30	48	25	25,3		M8							
CP 05 XCP 05	26,9	3/4"	St430 Zinc plated	27	37	66	40	33,5	18,5	M10							
			AISI 304L washed		35	52	25	19,5		M8							
CP 06 XCP 06	33,7	1"	St430 Zinc plated	34	44	72	40	33,2	21,8	M10							
			AISI 304L washed		42	60	25	20,2		M8							
CP 07 XCP 07	42,4	1.1/4"	St430 Zinc plated	43	53	82	40	33,8	26,2	M10							
			AISI 304L washed		51	68	25	19,8		M8							
CP 08 XCP 08	48,3	1.1/2"	St430 Zinc plated	49	61	100	60	45,8	29,2	M12							
			AISI 304L washed		59	78	36	23,8		M10							
CP 09 XCP 09	60,3	2"	St430 Zinc plated	61	73	112	60	45,8	35,2	M12							
			AISI 304L washed		71	90	36	23,8		M10							
CP 10 XCP 10	76,1	2.1/2"	St430 Zinc plated	77	89	128	60	46	43	M12							
			AISI 304L washed		87	106	36	24		M10							
CP 11 XCP 11	88,9	3"	St430 Zinc plated	89	101	140	60	45,5	49,5	M12							
			AISI 304L washed		99	118	36	23,5		M10							
CP 12 XCP 12	102	3.1/2"	St430 Zinc plated	102	118	159	70	52	56	M16							
			AISI 304L washed		114	137	45	30		M12							
CP 13 XCP 13	114,3	4"	St430 Zinc plated	115	131	173	70	52,8	62,2	M16							
			AISI 304L washed		127	151	45	30,8		M12							
CP 14 XCP 14	139,7	5"	St430 Zinc plated	140	156	197	70	52,2	74,8	M16							
			AISI 304L washed		152	175	45	30,2		M12							
CP 15	168	6"	St430 Zinc plated	168	184	225	70	52	89	M16	140	90 (91 PA)	75	8	10	25	
CP 16	219	8"	St430 Zinc plated	220	240	285	80	59,5	114,5	M20							
CP 17	273	10"	St430 Zinc plated	274	294	339		59,5	141,5	M20							
CP 18	324	12"	St430 Zinc plated	324	348	396	90	63	170	M24	220	150 (152 PA)	75	32	30		
CP 19	356	14"	St430 Zinc plated	356	380	428		63	186								
CP 20	406,4	16"	St430 Zinc plated	408	432	480		63,8	211,2								
CP 21	457,2	18"	St430 Zinc plated	460	484	532		64,4	236,6								
CP 22	508	20"	St430 Zinc plated	510	534	582		64	262								
CP 23	609,6	24"	St430 Zinc plated	612	636	684	64,2	312,8									



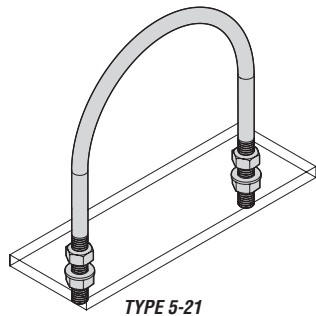
For material characteristics see page 78. Carbon steel St430 code CP Stainless steel AISI 304L code XCP Plastic pipe saddle BL Material PP-PA

Code PI.EFFE.CI.	O.D. of Pipe ØD1		Material and surface finishing	U-bolts with 2 nuts and 2 washers.							Plastic pipe saddle on demand.						
	in mm	nominal bore pipe in inch		A	L1	H1	H2	H3	H4	D	L2	L3	B	H5	H6	ØD	
CP 04 XCP 04	21,3	1/2"	St430 Zinc plated	22	32	60	40	38,3	10,7	M10	---						
			AISI 304L washed								30	48	25	25,3	M8		
CP 05 XCP 05	26,9	3/4"	St430 Zinc plated	27	37	66	40	33,5	18,5	M10	70	37	30	12	11		
			AISI 304L washed													35	52
CP 06 XCP 06	33,7	1"	St430 Zinc plated	34	44	72	40	33,2	21,8	M10	75	43	30	12	11		
			AISI 304L washed													42	60
CP 07 XCP 07	42,4	1.1/4"	St430 Zinc plated	43	53	82	40	33,8	26,2	M10	75	52	30	12	11		
			AISI 304L washed													51	68
CP 08 XCP 08	48,3	1.1/2"	St430 Zinc plated	49	61	100	60	45,8	29,2	M12	95	60	35	5	15		
			AISI 304L washed													59	78
CP 09 XCP 09	60,3	2"	St430 Zinc plated	61	73	112	60	45,8	35,2	M12	95	72	35	15	13		
			AISI 304L washed													71	90
CP 10 XCP 10	76,1	2.1/2"	St430 Zinc plated	77	89	128	60	46	43	M12	115	88	35	15	13		
			AISI 304L washed													87	106
CP 11 XCP 11	88,9	3"	St430 Zinc plated	89	101	140	60	45,5	49,5	M12	135	100	35	15	13		
			AISI 304L washed													99	118
CP 12 XCP 12	102	3.1/2"	St430 Zinc plated	102	118	159	70	47	61	M16	150	117	35	15	13		
			AISI 304L washed													114	137
CP 13 XCP 13	114,3	4"	St430 Zinc plated	115	131	173	70	47,8	67,2	M16	185	131	40	20	18		
			AISI 304L washed													127	151
CP 14 XCP 14	139,7	5"	St430 Zinc plated	140	156	197	70	47,2	79,8	M16	210	154,5	40	20	18		
			AISI 304L washed													152	175
CP 15	168	6"	St430 Zinc plated	168	184	225	70	47	94	M16	220	182	40	20	18		
CP 16	219	8"	St430 Zinc plated	220	240	285	80	54,5	119,5	M20	280	240	50	25	22		
CP 17	273	10"	St430 Zinc plated	274	294	339					54,5	146,5				350	294
CP 18	324	12"	St430 Zinc plated	324	348	396	90	56	177	M24	420	348	60	15	30		
CP 19	356	14"	St430 Zinc plated	356	380	458					56	193				460	380
CP 20	406,4	16"	St430 Zinc plated	408	432	480					56,8	218,2				510	432
CP 21	457,2	18"	St430 Zinc plated	460	484	532					57,4	243,6				550	484
CP 22	508	20"	St430 Zinc plated	510	534	582					57	269				600	534
CP 23	609,6	24"	St430 Zinc plated	612	636	684					57,2	319,8				700	636

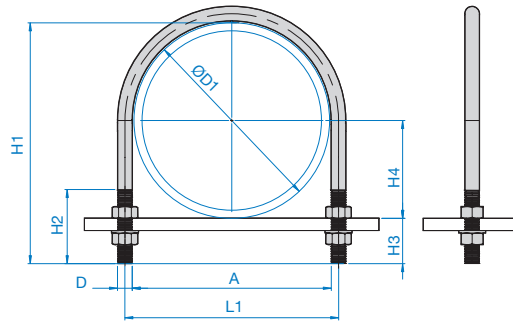
# ROUND STEEL U-BOLT ACCORDING TO DIN3570

## Order Codes and Dimensions

U-bolt DIN  
CD



TYPE 5-21



For material characteristics  
see page 78.

Round steel U-bolt  
Carbon steel St430 code CD

Code PI.EFFE.CI.	O.D. of Pipe ØD1		Material and surface finishing	U-bolts with 4 nuts and 2 washers.						
	in mm	nominal bore pipe in inch		A	L1	H1	H2	H3	H4	D
CD 05	26,9	3/4"	St430 Zinc plated	30	40	60	40	33,1	13,5	M10
CD 06	33,7	1"	St430 Zinc plated	38	48	66		32,3	16,9	
CD 07	42,4	1.1/4"	St430 Zinc plated	46	56	76		33,6	21,2	
CD 08	48,3	1.1/2"	St430 Zinc plated	52	62	82	50	33,7	24,2	M12
CD 09	60,3	2"	St430 Zinc plated	64	76	97		36,7	35,2	
CD 10	76,1	2.1/2"	St430 Zinc plated	82	94	113		36,9	30,2	
CD 11	88,9	3"	St430 Zinc plated	94	106	126	60	37,1	44,5	M16
CD 12	114,3	4"	St430 Zinc plated	120	136	155		40,7	57,2	
CD 13	139,7	5"	St430 Zinc plated	148	164	175		35,3	69,9	
CD 14	168,3	6"	St430 Zinc plated	176	192	201	70	32,7	84,2	M20
CD 15	193,7	7"	St430 Zinc plated	202	218	233		39,3	96,9	
CD 16	219,1	8"	St430 Zinc plated	228	248	263		43,9	109,6	
CD 17	273	10"	St430 Zinc plated	282	302	314	70	41	136,5	M24
CD 18	324	12"	St430 Zinc plated	332	352	365		41	162	
CD 19	356	14"	St430 Zinc plated	378	402	411		55	178	
CD 20	406,4	16"	St430 Zinc plated	428	452	463	70	56,6	203,2	M24
CD 21	508	20"	St430 Zinc plated	530	554	565		57	254	